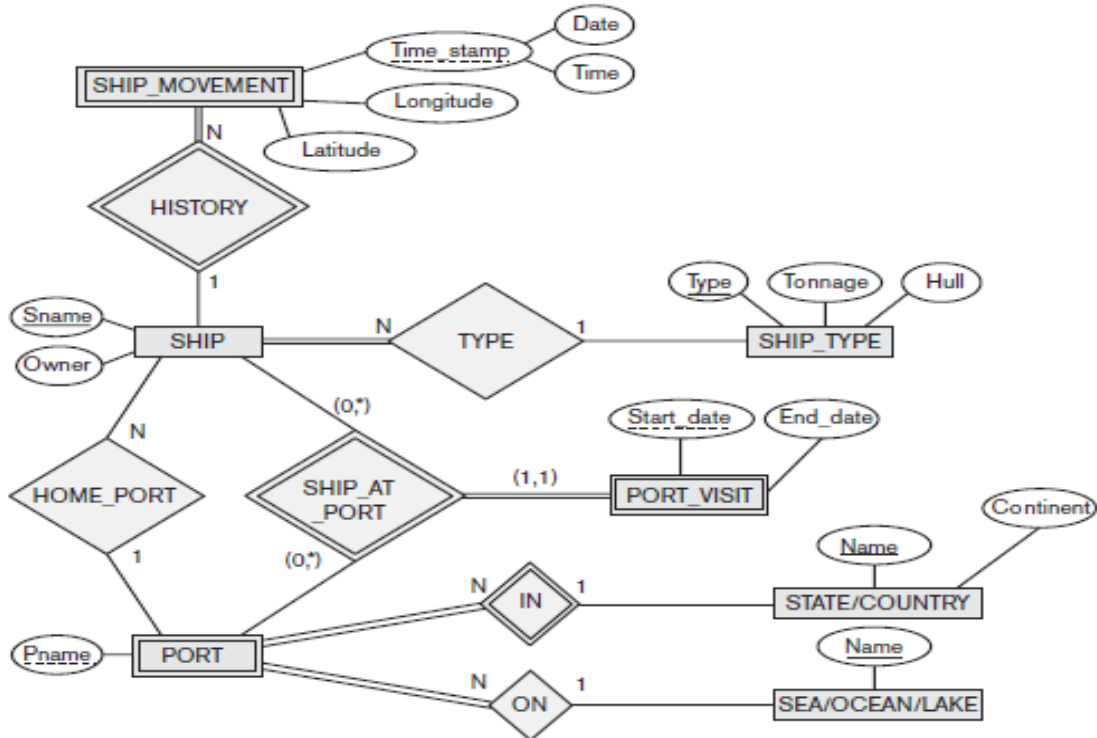
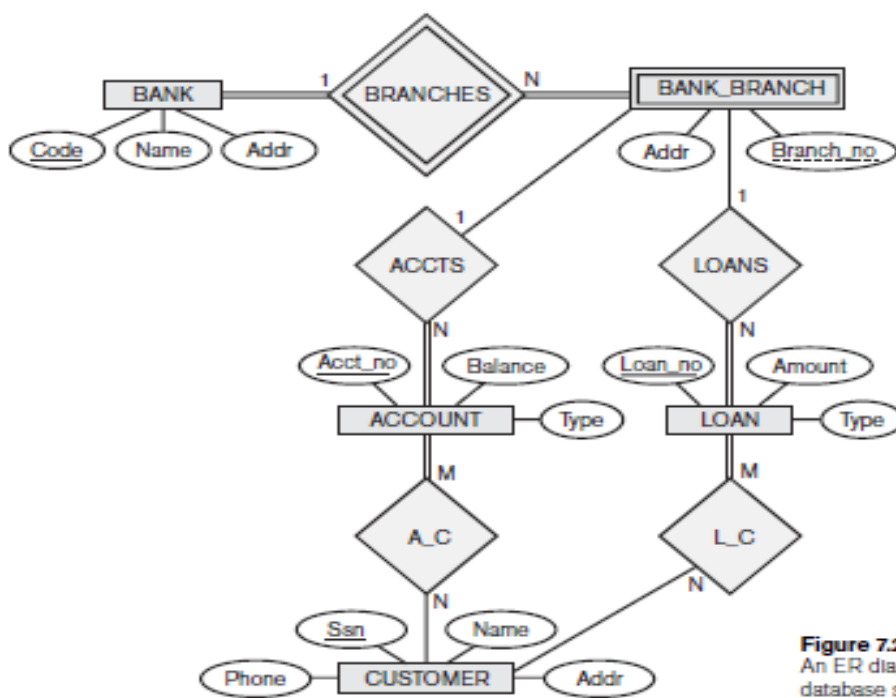


9.4. Figure 9.8 shows an ER schema for a database that can be used to keep track of transport ships and their locations for maritime authorities. Map this schema into a relational schema and specify all primary keys and foreign keys.



**Figure 9.8**  
An ER schema for a SHIP\_TRACKING database.

9.5. Map the BANK ER schema of Exercise 7.23 (shown in Figure 7.21) into a relational schema. Specify all primary keys and foreign keys.



**Figure 7.21**  
An ER diagram for a BANK database schema.